

Basic fly control

This will assist in demonstrating basic methods of fly control on dairy farms. You will also learn why we must control flies, the lifecycle of a fly and how to control flies in the working area.

Why must we control flies?

1. Flies cause production losses as they bother and irritate dairy cows.
2. Flies spread dangerous animal diseases.
3. Flies can contaminate milk.

Lifecycle of a fly

Flies breed in areas where there is enough food available for fly larvae to feed. A female lays up to 900 eggs in her lifetime of three weeks. She usually lays her eggs in dung heaps, uncovered drains, manure dams and drainage areas. Eggs develop into pupae in seven days. Pupae change into adult flies in two to three days. We must break the fly's lifecycle if we want to control the fly population.

Methods of fly control

The following methods can be used to control flies:

Mechanical methods

There are various fly traps available. We can put these in camps, stables and near dung heaps to catch flies.

Chemical control

We use two types of chemicals to control flies:

1. Larvicides are used to spray on dung heaps and other places where flies hatch. This prevents the larvae from hatching.
2. Insecticides are used as a spray on surfaces where flies sit. We must not spray near or onto feed or milking utensils.
3. We must use chemicals wisely and only as little as possible. We must also frequently change the type of insecticide we use.

Biological control

We must limit the places where flies can hatch. If we work our manure heaps regularly and if we compact our compost heaps, we will limit the places where flies can develop. Keep all drains covered and prevent areas of standing water. You can also use a parasitic wasp to control larvae.

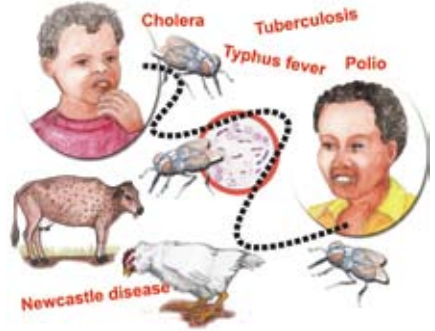
Information supplied by the MPO/Institute for Dairy Technology.

Flies

Flies spread diseases and can cause financial losses.

Control flies

- Place traps for flies in camps, stables and near dung heaps.
- Practise good manure management.
- Keep camps and stables clean and dry.
- Apply insecticides to places where flies like to sit and where they breed (in dung heaps, drains and manure dams).
- Use chemicals wisely and do not contaminate feed or water.
- Introduce parasitic wasps that attack pupae.



Vlieë

Vlieë versprei siektes en kan 'n mens laat geld verloor.

Beheer vlieë

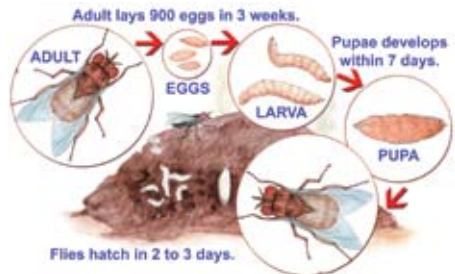
- Sit vlieëvangers in kampe, stalle en naby mishope neer.
- Beoefen gesonde misbestuur.
- Hou kampe en stalle skoon en droog
- Dien insekdoders toe in plekke waar vlieë graag sit en waar hulle uitbroei (in mishope, dreine en misdamme).
- Gebruik chemiese middels versigtig en moet nie voer of water besoedel nie.
- Gebruik parasitiese perdebye wat die papies aanval.

Izimpukane

Izimpukane zandisa izifo kanti zingabangela nokulahlekelwa ngokwezimali.

Lawula izimpukane

- Beka onoxhaka bezimpukane ezinkanjini, ezitebeleni kanye naseduze kwezindunduma zobolongwe.
- Wusebenze ngokuyikho umanyolo.
- Gcina izinkambu nezitebele zihlanzekile futhi zomile.
- Sebenzisa izibalali zinambuzane ezindaweni lapho izimpukane zithanda ukuhlala khona nalapho zizalela khona (ezindundumeni zobolongwe, kumadreyini kanye nasemadanyini kamanyolo).
- Sebenzisa amakhemikhali ngobuhlakani futhi ungangcolisi ukudla noma amanzi.
- Sebenzisa izinambuzane ezihlasela izibungu eziba yizimpukane.



Iimpukane

Iimpukane zisasaza izifo kwaye zingabangela ilahleko yemali.

Thintela iimpukane

- Beka iintanana zeempukane ezinkampini, ezitalini nakufutshane nobulongwe.
- Yiba nolawulo olufanelekileyo lomgquba.
- Gcina iinkampu nezitali zicocekile kwaye zomile.
- Sebenzisa izibulali-ntsholongwana kwiindawo ezihlala iimpukane nakwiindawo ezizalela kuzo. (Ubulongwe, kwimijelo yogutyulo nakumadama emigquba.)
- Sebenzisa iikhemikhali ngobulumko uze ungazidibanisi nefidi okanye namanzi.
- Zisa oonomeva abazizifunxi-gazi abahlasela imibungu



Ditshintshi

Ditshintshi di hasana malwetse mme di ka baka tahlehelu ya ditjhelete.

Laola ditshintshi

- Beha disebediswa se tshwasang ditshintshi dikampong, dijelong le haufi le diqubu tsa bolokwe.
- E ba le mokgwa o motle wa taolo ya moitedi.
- Boloka dikampo le dijelo di hlwekile hape di omme.
- Tshela dibolaya-dikokwanahloko dibakeng tseo ditshintshi di ratang ho dula ho tsona le moo di tswallang teng. (Diqubung tsa bolokwe, diforong tsa metsi a ditshila le matamong a moitedi.)
- Sebedisa dikhemikhale mme o se ke wa tshwaetsa dijo kapa metsi ka dikokwanahloko.
- Kenya di-parasitic wasps tse hlaselang mekone (pupae). **UM**



MADE IN AFRICA FOR AFRICA

Locally manufactured bottle filling equipment.

Contact us for single machines or turnkey projects:

• Tel: 021 862 9944 • Fax: 021 862 9931 • e-mail: sales@marefa.co.za

