

# Using pesticides and chemicals **safely**

(Add to PERSONAL HYGIENE AND HEALTH in *Dairy Farming at your fingertips*)

**An effective pest control programme ensures that milk and other dairy products are protected from pests. This includes a written procedure that describes how pests are controlled and monitored, together with records to show details of the monitoring that is being done.**

Pest control programmes must not pose a risk to food safety.

## Types of pests

The mostly common pests on a farm include rodents (such as mice and rats), ants, flying insects, spiders, cockroaches and birds.

These can be taken care of by using pesticides and other agricultural chemicals. Most of these are classified according to their hazard potential to humans, animals and the environment.

Hazard potential to humans is based on animal test results and/or user experience. Each pesticide is identified with one of the following signal words: 'Danger', 'Warning', or 'Caution'.

**Danger** on the label indicates the product has the highest toxicity to humans. The word **Poison** (in red) and the skull and crossbones are also required on the label of highly toxic materials. If **Danger** is printed on the label without the word **Poison** and the skull and crossbones symbol, the pesticide can cause severe skin injury or irreversible eye damage.

**Warning** identifies products with moderate toxicity. **Caution** identifies those pesticides that are least toxic to humans.

The signal word does not tell you how well a pesticide will control a pest. For example, **Danger** means the pesticide can be more dangerous to you, not that it is more toxic to pests than a product labelled with **Caution**.

1. Use pesticides only when needed.
2. Always ask the advice of an expert on problems with pests and pesticides.
3. Use the correct pesticide for the problem.
4. Know any hazards that the pesticide might present.
5. Read and follow the label instructions.
6. Know what you are to do in the event of an accident.



### Plan ahead

1. Take time to explain the safe use of pesticides to other employees.
2. Check your application equipment for leaks or clogged lines, nozzles and strainers.
3. Calibrate your equipment frequently for proper output, using water.
4. Check the respirator for cleanliness, a clean filter and proper fit.
5. Check gloves and other protective clothing for holes and cleanliness before each use.
6. Make sure plenty of clean water, detergent, towels and a clean change of clothing are available.
7. Do not permit delivery of pesticides unless a responsible representative is on hand to receive and properly store them.
8. Make sure that people have been warned and livestock and pets that may be exposed have been removed from the area to be treated.
9. Cover food and water containers.
10. Never eat, drink or smoke when handling pesticides.
11. Wash your hands before eating, smoking or drinking.
12. Rinse pesticide containers before recycling or disposal.

### Follow label directions

The label tells you how to use the pesticide properly and safely. Use a pesticide only on crops, animals or other sites as the label directs.

Use the recommended rate and apply the pesticide at the time and in the manner stated.

### Wear protective clothing

While people generally realise the danger in getting pesticides in the mouth or eyes, or breathing gaseous fumes, they are frequently unaware of how harmful many pesticides are when absorbed through the skin. Any time you handle or apply pesticides, wear at least a long-sleeved shirt and long-legged trousers made of a closely woven fabric, socks and liquid-proof shoes.

## Pest control programme

A written procedure on pest control to protect dairy products from pests.

### Follow the pest control programme:

Monitor and keep records of procedures. Use pesticides only when needed. Wear gloves and other protective clothing. Follow instructions on the label. Explain correct application to the work team. Check, clean and calibrate your application equipment before and after use. Provide clean water, detergent and towels for washing hands after application. Rinse pesticide containers before recycling or disposal.



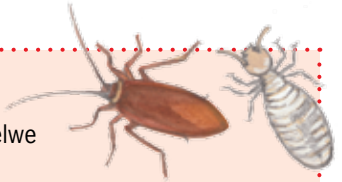
## Plaaigbeheerprogram

'n Geskrewe prosedure vir plaaigbeheer om suiwelprodukte van plae te beskerm.

**Volg die plaaigbeheerprogram:** Monitor en hou rekords van prosedures. Gebruik insekdoders net wanneer nodig. Dra handskoene en ander beskermende klere. Volg die instruksies op die etiket. Verduidelik die korrekte gebruik aan die werkspan. Gaan die toerusting na, maak dit skoon en kalibreer dit voor en na gebruik. Verskaf skoon water, seep en handdoeke om hande na gebruik te was. Spoel insekdoderhouers voordat dit weer gebruik of weggegooi word.

## Uhlelo lokulawula izinambuzane

Inqubo ebhaliwe ngokulawula izinambuzane ukuze kuvikelwe imikhiziqo yobisi ezinambuzaneni.



**Landela uhlelo lokulawula izinambuzane.** Buka bese ugcina amarekhodi wezinqubo. Sebenzisa izibulali zinambuzane uma kudingeka kuphela. Gqoka amagilavu kanye nezinye izimpahla zokuzivikela. Landela imiyalelo kwilebuli. Chazela ithimba labasebenzi ngohlelo lokusebenza olulungile. Hlola, hlanza, linganisa izinto zokusebenza ngaphambi nangemuva kokuthi zisetshenzisiwe. Nikela ngamanzi ahlanzekile, amakhemikhali wokugeza, amathawula wokugeza izandla emva kokugcoba. Yakaza izitsha zokufaka imithi yokubulala izinambuzane ngaphambi kokuba zisetshenziswe futhi noma zilahlwe.

## Inkqubo yokulawulwa kwezitshabalalisi

Inkqubo ebhalwe phantsi ngokulawulwa kwezitshabalalisi ukukhusela imveliso zobisi kwizitshabalalisi.

### Landela inkqubo yokulawulwa kwezitshabalalisi.

Hlola kwaye ugcine iirekhodi zeenkqubo. Sebenzisa iyeza lokubulala izitshabalalisi kuphela xa kukho imfuneko. Faka iiglavu kunye nezinye impahla ezikhuselayo. Landela imiyalelo ekwilebhule. Chaza ukusetyenziswa okufanelekileyo kwiqela elisebenzayo. Khangela, coca kwaye phawula iithemomitha

rhoqo ukuze ukwazi ukulinganisa ngokuchanekileyo izixhobo zakho ozakuzisebenzisa phambi kunye nasemva kokuzisebenzisa. Bonelela ngamazni acocekileyo, isicocisi, iitawuli zokuhlamba izandla emva kokuzisebenzisa. Pula iziquqathu zamayayeza okubulala izitshabalalisi phambi kokuba uzilungise ukuze zisetyenziswe kwakhona okanye phambi kokuba uzilahle.



### Lenaneo la taolo ya disenyi

Mokgwatshebetso o ngotsweng fatshe wa taolo ya disenyi ho sireletsa dihlahiswa tsa lebeso disenyng.

#### Latela lenaneo la taolo ya disenyi.

Beha leihlo mme o boloko direkoto tsa mekgwatshebetso. Sebedisa dibolayadikokwanyana feela ha ho hlokeha. Kenya ditlalafo le diaparotse tse ding tse sireletsang. Latela ditaolo tse leiboleng. Hlalosa tshebediso e nepahetseng sehlopheng sa tshebetso. Lekola, hlwekisa mme o tshwaye diyuniti disebedisweng tse sebediswang pele le ka mora ho di sebedisa. Fana ka metsi a hlwekileng, di-detergernt, dithaole bakeng sa ho hlapa matsoho ka mora tshebediso. Tsokotsa ditshelo tsa dibolayadikokwanahloko pele o di risaekela kapa o di lahla. 