

Taking care of animals

An important aspect of animal care is being able to identify and treat sick animals. Animals can contract diseases of different types with different causes.

The following diseases can be found in dairy herds:

Organic diseases

Acidosis, ketosis and milk fever are some metabolic diseases we should know about. Like humans, animals can also get organic diseases such as heart, kidney, liver and lung diseases. These can be caused by bacteria or viruses and can spread from one animal to another.

Poisoning

There are many poisonous plants that can cause poisoning of animals. Animals are also sometimes poisoned if they get into contact with insecticides.

Metabolic diseases

These are illnesses that are caused by abnormal digestion of feed or by feed that does not provide the correct balance of ingredients or are too acidic or too alkaline. Acidosis, ketosis and milk fever are some metabolic diseases we should know about.

Diseases transferred by insects

Ticks and other insects transfer disease from one animal to another.

Cancers and tumours

Animals also suffer from cancer or malignant growths. A malignant growth is a growth that hurts the animal or interferes with the animal's production.

Diseases caused by parasites

We get external parasites such as ticks and internal parasites such as worms that can cause illness and/or death if we do not treat the cattle.

Anaplasmosis (tick-borne gall sickness)

This tick-borne disease of cattle is caused by a micro-organism that occurs in the red blood cells of infected animals and can be effectively controlled by vaccination.

How transmitted

Under normal conditions, anaplasmosis is biologically transmitted by at least five different tick species that become infected when they feed (suck blood) on infected animals or animals that have recovered from the disease and remain carriers of the parasite. Blood sucking flies and horse flies that often feed on different animals at short intervals can also transmit the disease between cattle by means of small quantities of blood remaining on their mouthparts.

Types of animal diseases

Diseases of the organs: such as heart, kidney, liver, lungs; caused by bacteria or viruses; can spread from one animal to another.

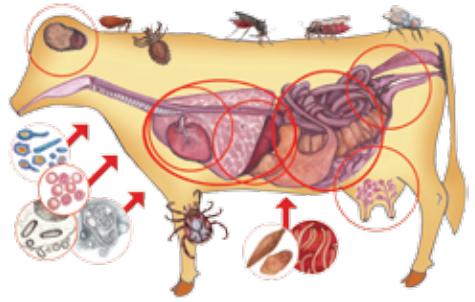
Poisoning: poisonous plants, insecticides.

Metabolic diseases: caused by abnormal digestion or incorrect balance of ingredients in the feed (too acidic or too alkaline); acidosis, ketosis, milk fever.

Ticks or insects transfer diseases from one animal to another.

Cancers and tumours: causes pain and lowers production.

Parasites: external (ticks, ringworm), internal (worms); lower production and cause illness and death.



Soorte dieresiektes

Orgaansiektes, soos die hart, niere, lewer en longe; word veroorsaak deur bakterieë of virusse; kan van een dier na 'n ander versprei.

Vergiftiging: giftige plante, insekdoder.

Metabiese siektes: veroorsaak deur abnormale spysvertering of verkeerde balans van die voerbestanddele (te suur of te alkalies); asidose, ketose, melkkoors.

Bosluike of insekte dra siektes van een dier na 'n ander oor.

Kankers en gewasse veroorsaak pyn en verminder produksie.

Parasiete: ekstern (bosluike, ringwurm), intern (wurms); verminder produksie en veroorsaak siektes en vrektes.



Izinhlobo zezifo zemfuyo

Izifo zezitho: njengezenhliziyo, izinso, isibindi, amaphaphu; zibangelwa ngamabhaktheriya noma amagciwane; zingase zisabalale zisuka kwesinye isilwane ziya kwesinye.

Ukuthola ushevu: izitshalo ezinoshevu, izibulala-zinambuzane.

Izifo ezibangwa yizinqubo ezakhayo

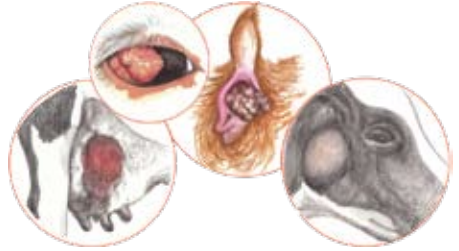
emzimbeni: zibangelwa ukugaywa kokudla ngendlela engafanele noma ukungabhalansi kwezakhi zokudla kwemfuyo (okune-asidi eningi ngokweqile noma i-alkaline eningi ngokweqile); i-acidosis, i-ketosis, imfiva yobisi.



Amakhizane noma izinambuzane zidlulisela izifo ukusuka kwesinye isilwane ukuya kwesinye.

Imidlavuzane nezigaxa: kubanga ubuhlungu futhi kwehlisa ukukhiqiza.

Izilo (parasites): zangaphandle (amakhizane, umbandama), ezangaphakathi (izilo); kwehlisa ukukhiqiza futhi kubanga ukugula nokufa.



Iindidi zezifo zezilwanyana

Izifo zamalungu: anjengentliziyo, izintso, isibindi, imiphunga; ezibangelwa ziibhakthiriya okanye iintsholongwane; zinganwenwa ukusuka kwesinye isilwanyana ukuya kwesinye.

Ukutyhefa: ityhefu yezityalo, izibulala-zinambuzane.

Izifo zenguqulo yokutya emzimbeni (metabolic): ezibangelwa kukwetyisa okungaqhelekanga okanye ukufezeka okungachanekanga kwezithako kwifula (iasidi enininzi okanye ialkali eninzi); iasidosis, iketosis, ifiva yobisi.

Amakhalane okanye izinambuzane zidlulisa izifo ukusuka kwesinye isilwanyane ukuya kwesinye.

Umhlaza namathumba: ubangela ingqaqambo kwaye ithoba ukuvelisa.

Izidleleli: ngaphandle (amakhalane, isitshanguba), ngaphakathi (iintshulube); zithoba ukuvelisa kwaye zibangela isigulo nokufa.



Mefuta ya malwetse a diphoofofo

Malwetse a ditho tsa mmele: jwalo ka pelo, diphio, sebeta, matshwafo; a bakwang ke baktheria kapa divaerese; a ka hasana ho tswa phoofofong e nngwe ho ya ho e nngwe hape.

Ho kenwa ke tjhefo: dimela tse nang le tjhefo, dibolaya-dikokwanyana.

Malwetse a ho fetola dijo: a bakwa ke thuiso e sa tsamayeng ka tlwaelo kapa tekanyo e sa nepahalang ya metswako phepong (asete e ngata kapa alkaline e ngata); acidosis, ketosis, feberu ya lebese.

Dikgofa kapa dikokwanyana di fetisa malwetse ho tswa phoofofong e nngwe ho ya ho e nngwe hape.

Dikankere le dikotola: di baka mahlaba mme di fokotsa tlhahiso.

Diwamadi: tsa ka ntle (dikgofa, ditlapedi), tsa ka hare (diboko); di theosa tlhahiso e be di baka ho kula le ho shwa. [UM](#)