

Immunisation programme for calves


To improve the health of your calves, it is important to work closely with your veterinarian to compile an immunisation programme for your farm. Your veterinarian will be able to tell you which diseases are important on your farm.

Calves must also be dosed against internal parasites such as tapeworm and roundworm, from a young age. By controlling internal parasites you could reduce the number of calf deaths considerably. The table below is an example of an immunisation programme for some common diseases in South Africa.

Disease or parasite	Treatment programme	Remarks
Anaplasmosis	3-9 months	Once
Anthrax	3-6 months	Annually
Contagious abortion (Brucellosis)	4-8 months	Once only to heifers
Paratyphoid	7-14 days	Once only if a problem
Blackquarter	6-9 months, plus booster 3 weeks later	Annually age 3 years
Lumpy skin disease	7 months or older	Annually, September-November
Three-day stiff sickness	6 months or older	Annually, September-November
Redwater	3-9 months	Once
Heartwater	1-4 weeks old	Once
Internal parasites		
Roundworms	2, 4, 6, 9 and 12 months	Strategic dosing thereafter annually in March from second year
Flukes	Start in September, then again in mid-March	
Tapeworms	1, 2 and 5 months	

Ask your veterinarian which vaccinations are a MUST, which are good to immunise (recommended) and which only have to be immunised occasionally (optional). It is essential to immunise animals for heartwater, redwater and anaplasmosis in areas where the diseases are always present (endemic).

Before using a vaccine, it is important to read all labels of vaccine and dosing remedies carefully. A vaccine will only work if:

- The right dosage is given
- The animal is vaccinated at the right age
- The animal is vaccinated when it is healthy
- The booster vaccination is given if needed. 

Keep your calves healthy

A healthy calf grows better and will not die easily.

Follow an immunisation programme for your farm. Ask your veterinarian which diseases are important in your area (such as redwater, heartwater or anaplasmosis).

Treat calves against internal parasites from a young age.

Important!

- Read the labels carefully and follow the instructions.
- Always give the right dosage, at the right age, when the animal is healthy and a booster vaccination if needed.

Hou jou kalwers gelukkig

'n Gesonde kalf groei beter en sal nie sommer vrek nie.

Volg 'n immuniseringsprogram vir jou plaas. Vra jou veearts uit oor watter siektes in jou omgewing belangrik is (soos rooiwater, hartwater of anaplasmoese).

Behandel kalwers van jongs af teen interne parasiete.

Belangrik!

- Lees die etikette deeglik en volg die gebruiksaanwysings.
- Gee altyd die korrekte dosis, op die regte ouderdom, wanneer die dier gesond is en dien 'n skraag dosis toe indien nodig.



Gcina amathole eenkomo zakho ephilile

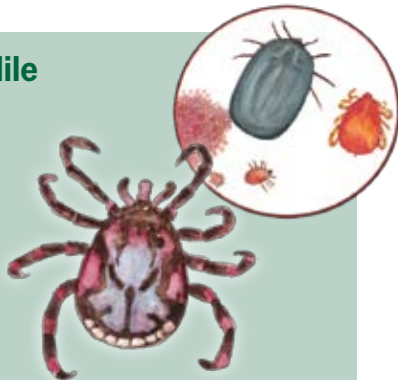
Ithole elisempilweni likhula ngcono yaye eliyi kufa lula.

Landela inkqubo yogonyo kwifama yakho. Buza ugqirha wakho wezilwanyana malunga nezifo ezibalulekileyo kwindawo yakho (ezinjengomanzabomvu, umanzentliziyo okanye ianaplasmosis).

Nyanga amathole kwizilwana eziwatya ngaphakathi (ezifana neentshulube) esemancinci.

Okubalulekileyo!

- Funda iileyibheli ngocoselelo uze ulandele imiyalelo.
- Soloko useza umlinganiselo ofanelekileyo, kubudala obufanelekileyo, xa imfuyo yakho isempilweni uze uyinike isitofu sokuyincedisa xa kukho imfuneko.



Gcina amankonyane akho anempilo

Inkonyane elinempilo likhula kangcono futhi angeke life kalula.

Landela uhlelo lokunikeza imijovo epulazini lakho. Buza udokotela wezilwane zakho ukuthi yiziphi izifo ezisemqoka endaweni yangakini (ezifana nombendeni, i-heartwater noma i-anaplasmosis).

Lapha izinkonyane maqondana nomahlalecela bangaphakathi ukusukela ngenkathi zisencane.

Okusemqoka!

- Funda amalebhuli ngokucophelela bese ulandela imiyalelo.
- Ngaso sonke isikhathi nikeza umthamo ofanele, eminyakeni yobudala efanele, uma isilwane sinempilo futhi sidinga nje umjovo wokukhuphula isimo saso.

Manamane a hao a ka phela hantle

Namane e phelang hantle e hola hantle mme e ke ke ya shwa ha bonolo.

Latela lenaneo la diente polasing ya hao. Botsa ngaka ya diphoofolo ka mafu a atileng tulong ya lona (jwalo ka feberu ya dikgoho, moroto o mofubedu kapa anaplasmosis).

Phekola manamane kgahlanong le dikgofa ho tloha bonnyaneng.

Hlokomela!

- Badisisa diphepheshana tsa meriana ka hloko mme o latele ditaelo hantle.
- Ka mehla fana ka tekanyo e nepahetseng ya moriana, kgonlong e nepahetseng, ha phoofolo e phela hantle mmoho le mohlabelelo (vaccination) ha ho hlokahala. [UM](#)

