

Prevent and control redwater

Redwater is an important tick-borne disease in cattle and is also called babesiosis. Although redwater causes big losses in South Africa every year, it can be prevented and controlled by vaccination. In South Africa, two parasites cause two different forms of redwater, namely African redwater and Asiatic redwater.


Redwater can break out almost everywhere in South Africa, especially where there is high rainfall and many ticks. African redwater is found most often and is transmitted by the blue tick, although the red-legged tick has also been known to cause African redwater. Asiatic redwater is not as widespread and is found in high rainfall regions such as the Eastern Cape, KwaZulu-Natal and eastern Mpumalanga.

Redwater outbreaks occur more regularly during summer and autumn, when there are more ticks in the veld. Ticks become infected with redwater when they feed on cattle that have the disease or are carriers of the redwater parasites. The disease is then transmitted through the tiny tick eggs. The eggs cling to grass and when they hatch, the larvae climb onto the grazing cattle and bite them.

Redwater is very dangerous, as it can infect unborn calves. This can lead to abortion or the calf can die shortly after birth. Calves younger than two months of age are in danger of becoming infected, if their mothers are not immune to redwater. Calves of cows that are immune, are protected because they develop immunity through the mother's colostrum. This immunity grows smaller as the animals grow older. The disease is very serious in adult animals that are infected for the first time. Redwater vaccine is generally used to immunise animals, as most do not have a natural immunity against the disease.

The following symptoms may point to redwater in your cattle:

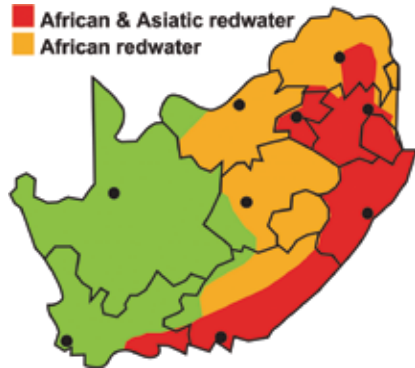
- High temperature or a morning fever
- Light to dark red or brown coloured urine
- Anaemia (cattle become weak and pale because of a lack of red blood cells)
- Jaundice, in advanced cases (the skin and eyeballs become yellow)
- The animal is depressed and does not want to eat
- It is weak, moves slowly and sometimes has a dry nose
- The coat becomes dull
- The animal develops an upset stomach
- The muscles may show tremors and convulsions (like fits or cramps).

If your cattle show these signs, contact your veterinarian immediately. He or she will prescribe medicine for the treatment of the disease. If this is done early on, the animal may recover and will not die. But to prevent this disease from killing your herd, you have to vaccinate your calves between the ages of three and nine months. You can also make sure that your vaccinated cattle develop a long-lasting immunity against redwater, by letting them graze in pastures where ticks carrying the redwater parasite, are present. Every time that such a tick bites a vaccinated animal, the animal's immunity will become stronger. 

Redwater

Rooiwater / Isichenene / Isifo seenkomo esenza ukuba zichame umchamo obomvu (Redwater) / Mala a mafubedu

- Redwater is spread by infected ticks.
 - Rooiwater word deur besmette bosluise oorgedra.
 - Isichenene sisatshalaliswa amakhizane athwele lesi sifo.
 - Isifo seenkomo esenza ukuba zichame umchamo obomvu sisasazwa ngamakhalane awosulelekileyo.
 - Mala a mafubedu a atiswa ke dikgofa tse tshwaeditsweng.
- Redwater can lead to abortion or the calf can die shortly after birth. Calves younger than two months of age are in danger of becoming infected, if their mothers are not immune to redwater.
 - Rooiwater kan aborsie veroorsaak of die kalf kan kort na geboorte doodgaan. Kalwers wat jonger as twee maande is, kan besmet raak indien hulle ma nie immuun teen rooiwater is nie.
 - Isichenene singaholela ekuphunzeni noma ukuthi inkonyane life lisanda kuzalwa. Amankonyane angaphansi kwezinyanga ezimbili asengozini yokuthelaleka, uma onina bengavikelekile esichenene.
 - Isifo seenkomo esenza ukuba zichame umchamo obomvu singakhokelela ekuphunzeni okanye ithole lingafa msinyane nje emva kokuba lizelwe. Amathole amancinane kuneenyanga ezimbini zobudala asengozini yokosuleleka, ukuba ngaba oonina bawo abalufumananga ugonyo lwesifo seenkomo esenza ukuba zichame umchamo obomvu.
 - Mala a mafubedu a ka baka ho tswa ha mpa kapa namane e ka shwa hang kamora ho hlaha. Manamane a ka tlasa dikgwedi tse pedi ka boholo a kotsing ya ho tshwaetseha, ha bomma oona ba sa sireletseha ho mala a mafubedu.

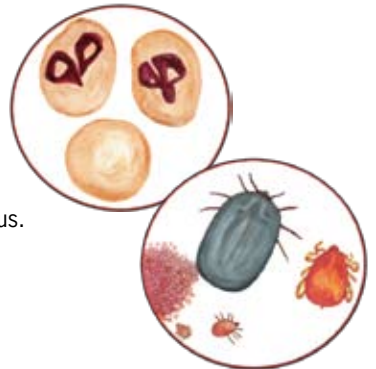


Symptoms

- Fever.
- Light to dark red or brown coloured urine.
- Anaemia.
- Jaundice (skin and eyeballs become yellow).
- Does not want to eat. Weak, moves slowly and sometimes a dry nose.
- Coat is dull, stomach upset.
- Muscles show cramps.

Siektetekens

- Koors.
- Lig- tot donkerrooi of bruinerige uriene.
- Bloedarmoede.
- Geelsug (vel en oogballe word geel).
- Wil nie eet nie. Is swak, beweeg stadig en het soms 'n droë neus.
- Die pels is dof en die maag is omgekrap.
- Die spiere kramp op.



Izimpawu

- Imfiva
- Umchamo obomvu noma onsundu.
- Ukukuphaphatheka kwegazi.
- Ijondisi (isikhumba namehlo kuba phuzi)
- Ukungathandi ukudla, ukungabi namandla, ukunyakaza kancane ngesinye isikhathi ikhala elomile.
- Uhudo.
- Imisipha ikhombisa ukugoqana.



Iimpawu

- Umkhuhlane.
- Umchamo ombala ubomvu okukhanyayo nokumdaka okanye omdaka.
- I-Anaemia.
- Isifo senyongo (isikhumba nokhozo lweliso zibatyheli).
- Azifuni ukutya. Zibuthathaka, zihamba kancinane kwaye ngamanye amaxesha impumlo iyoma.
- Isikhumba siphatshile, isisu sibi.
- Izihlunu zibonisa inkantsu.



Matshwao

- Feberu
- Moroto o mmala o bokgubedu bo hlakileng ho isa ho o mokgubedu haholo kapa o sootho.
- Phokolo ya madi.
- Bohloko ba nyooko (letlalo le mahlo di ba tshela).
- E hana dijo. E fokotse, e tsamaya butle mme ka nako e nngwe e omme ka dinkong.
- Letlalo ha le na bophelo, letshollo.
- Mesifa e bontsha ho honyetsheha.

- **Vaccinate calves between 3 to 9 months of age.**
- **Immuniseer kalwers tussen die ouderdomme van 3 tot 9 maande.**
- **Goma amankonyane aphakathi kwezinyanga ezintathu kuya kwezinyanga eziyishiyagalolunye ubudala.**
- **Gonya amathole phakathi kweenyanga ezi-3 ukuya kwezili-9 zobudala.**
- **Enta manamane a boholo bo pakeng tsa dikgwedi tse 3 ho isa ho tse 9. UM**

