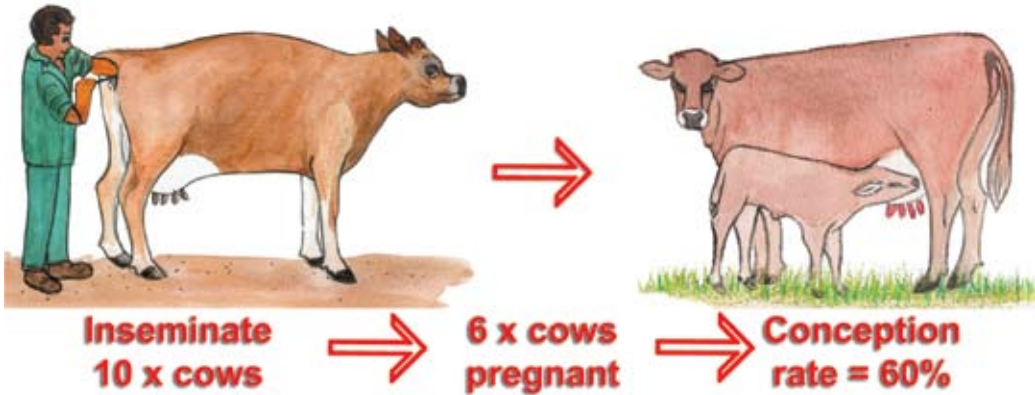


# Conception rate

- Bevrugtingstempo
- Izinga lokubamba
- Isantya sokuzala
- Sekgahla sa kemaro



- Conception rate is the percentage of cows that become pregnant through artificial insemination or natural mating.
- Bevrugtingstempo is die persentasie koeie wat dragtig word deur kunsmatige inseminasie of natuurlike paring.
- Izinga lokubamba yiphesenti lezinkomazi ezimitha ngenxa yokumithiswa ngesandla noma ngokukhwelaniwa ngokwemvelo.
- Isantya sokuzala bubungakanani ekhulwini beemazi zeenkomo eziye zimithe ngokumiselwa okanye ngokukhwelwa.
- Sekgahla sa kemaro ke persente eo ka yona dikgomo di imang ka yona ka ho kengwa peo ka mokgwa wa maiketsetso kapa di kopana ka tlhaho.

## Factors that affect conception rates

### Faktore wat bevrugtingstempo beïnvloed

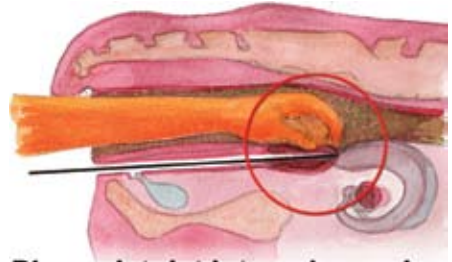
### Izinto enomthelela ezingeni lokubamba

### limeko ezichaphazela isantya sokumitha

### Dintlha tse amang sekgahla sa kemaro

- **Nutrition:** Cows in good body condition come on heat and get pregnant more quickly.
- **Voeding:** Koeie met goeie liggaamskondisie kom makliker op hitte en word vinniger dragtig.
- **Ukudla:** Izinkomazi ezisesimweni esikahle somzimba zifinyelela ekukhanukweni zimithe ngokushesha.
- **Isondlo:** limazi zeenkomo ezomeleleyo ziyadumba (xa zifuna inkunzi okanye ukukhwelwa) zize zimithe ngokukhawuleza.
- **Phepo:** Dikgomo tse boemong bo botle ba mmele di kopana le tse ding tse tona e be di emara ka potlako.

- **Semen and semen straws:** Handle with care.
- **Semen en semenstrooitjies:** Hanteer met sorg.
- **Isidoda kanye nemicu yesidoda:** Kuphathe ngokucophelela
- **Amadlozi nemicinga yamadlozi:** Kwenze ngononophelo.
- **Botona le mahlaka a botona:** Tshwara ka hloko.



**Place pistollet into vulva and vagina to the end of the cervix.**

- **Insemination techniques:** Be careful not to damage the fragile lining of the uterus. Good hygiene prevents infection in the uterus.
- **Inseminasietegnieke:** Wees versigtig om nie die delikate voering van die baarmoeder te beskadig nie. Goeie higiëne verhoed infeksie in die baarmoeder.
- **Amaqhinga okumithisa ngesandla:** Cophelela ungalimazi untwentwesi lwengquza. Inhlanzeko ivimbela ukubhibha engquza
- **Indlela zokumisela:** Lumnka ngayonalalisi inwebu ebuthathaka yesibekeko. Ukunonotshelwa kococeko kukhusela ukosuleleka kwesibekeko.
- **Mekgwa ya ho kenya botona ho tse tsehadi:** Hlokomela hore o se ke wa baka tshenyi moleng o bonolo wa popelo. Tshebetso e ntle ya bophelo e thibela tshwaetso popelong.

- Place semen inside the uterus.
- Plaas semen binne in die baarmoeder.
- Faka isidoda ngaphakathi impela kwengquza.
- Faka amadlozi ngaphakathi kwisibekeko.
- Kenya botona ka hara popelo



- Make sure that the cow is in heat.
- Maak seker die koei is op hitte.
- Qinisekisa ukuthi inkomazi ikhanukiwe.
- Qinisekisa ukuba imazi idumbile (ifuna inkunzi, okt. ukukhwelwa).
- Etsa bonnete ba hore kgomo e maemong a ho batla ho kopana le e tona.

- Good management and observation is very important!
- Goeie bestuur en waarneming is baie belangrik!
- Ukuphatha okuhle kanye nokubhekisisa kusemqoka kakhulu!
- Kubaluleke kakhulu ukuyiqhuba kakhule nokuyiqwalasela ngononophelo le nkqubo.
- Tsamaiso le tebelo e ntle ke tsona dinto tsa bohlokwa haholo! **UM**

