

Fly control



by Dr Arno Moore, managing director of BISA

What can be more irritating to man and his animals than ongoing pestering by flies? Flies can cause tremendous financial losses. Animal production can decrease. Milk production easily drops by one to two litres per cow per day because of flies. Flies can also spread dangerous diseases like cholera, tuberculosis, polio, typhus fever, Newcastle disease and pink eyes.

The life cycle of the fly

Flies breed in areas where there is enough food for the developing fly larvae to feed on. This includes dung heaps, uncovered drains, manure dams, drainage areas and decomposing compost heaps.

The female fly lays up to 900 eggs in her lifetime of three weeks. These eggs will develop into fly pupae within seven days. After two or three days adult flies will start hatching. Because of the short life cycle (ten days under favourable conditions), fly numbers can increase drastically in a short time.

Fly control

There are several ways to control flies, such as:

- Mechanical methods (fly catching methods)
- Chemical control (insecticides and larvicides)
- Biological control (parasitic wasps that prevent flies from hatching from fly pupae).

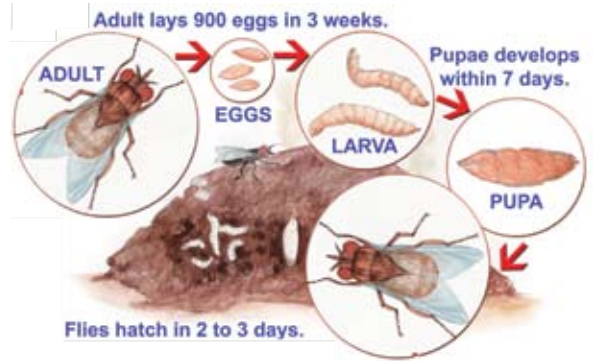
Effective long-term fly control should be an integrated approach, making use of various control measures such as:

- **Reducing fly breeding sites:** Special attention should be given to manure management, reducing feed spillage, reducing spilling from silage pits and the prevention of water leaks.
- **Wise use of chemicals or adult fly catching techniques:** This will prevent the flies from becoming resistant to chemicals. Rotate chemical groups and target the adult fly rest places such as under roofs, against feed bunks, fences and vegetation. Killing adult flies is not an effective way of fly control. Once you see flies, they may already have caused production losses, and might have already laid eggs. The endless fly nuisance cycle will start all over again.
- **Applying larvicides to fly breeding sites:** Cyromazine is the best larvacide to use, as it does not affect good insects such as parasitic wasps. But be careful to not contaminate feed or water.
- **Introduce biological fly control:** Keep fly areas dry. This will decrease fly breeding and increase parasitic wasp breeding. Parasitic wasps are now bred in South Africa for release on fly breeding areas on farms. The wasps are tiny and harmless to everything else but fly pupae.

Short term control is not effective and is a waste of money. You can now buy parasitic wasps for biological fly control. It should be included in a complete fly control plan for cost-effective long term control, and will minimise the use of insecticides.

For more information, contact Dr Arno Moore on 083 270 4866. **UM**

Flies



- **Vlieë**
- **Izimpukane**
- **Iimpukane**
- **Ditshintshi**

- Flies spread diseases and can cause financial losses.
- Vlieë versprei siektes en kan 'n mens laat geld verloor.
- Izimpukane zandisa izifo kanti zingabangela nokulahlekelwa ngokwezimali.
- Iimpukane zisasaza izifo kwaye zingabangela ilahleko yemali.
- Ditshintshi di hasana malwetse mme di ka baka tahlehelo ya ditjhelete.

Control flies

Beheer vlieë

Lawula izimpukane

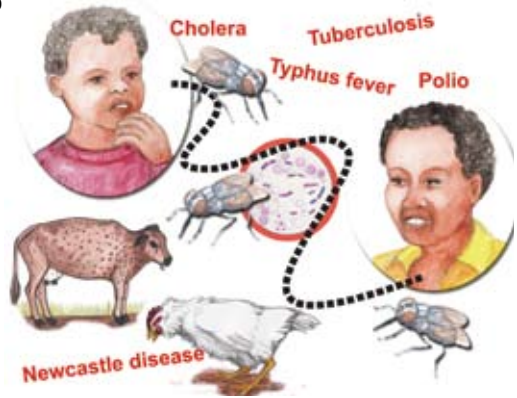
Thintela iimpukane

Laola ditshintshi

- Place traps for flies in camps, stables and near dung heaps.
- Sit vlieëvangers in kampe, stalle en naby mishope neer.
- Beka onoxhaka bezimpukane ezinkanjini, ezitebeleni kanye naseduze kwezindunduma zobulongwe.
- Beka iintanjana zeempukane ezinkampini, ezitalini nakufutshane nobulongwe.
- Beha disebediswa se tshwasang ditshintshi dikampong, dijelong le haufi le diqubu tsa bolokwe.
- Practise good manure management.
- Beoefen gesonde misbestuur.
- Wusebenze ngokuyikho umanyolo.
- Yiba nolawulo olufanelekileyo lomgquba.
- E ba le moggwa o motle wa taolo ya moitedi.
- Keep camps and stables clean and dry.
- Hou kampe en stalle skoon en droog.
- Gcina izinkambu nezitebele zihlanzekile futhi zomile.
- Gcina iinkampu nezitali zicocekile kwaye zomile.
- Boloka dikampo le dijelo di hlwekile hape di omme.
- Apply insecticides to places where flies like to sit and where they breed (in dung heaps, drains and manure dams).
- Dien insekdoders toe in plekke waar vlieë graag sit en waar hulle broei (in mishope, dreine en misdamme).



- Sebenzisa izibulali zinambuzane ezindaweni lapho izimpukane zithanda ukuhlala khona nalapho zizalela khona (ezindundumeni zobulongwe, kumadreyini kanye nasemadanyini kamanyolo).
- Sebenzisa izibulali-ntsholongwana kwiindawo ezihlala iimpukane nakwiindawo ezizalela kuzo. (Ubulongwe, kwimijelo yogutyulo nakumadama emigquba.)
- Tshela dibolaya-dikokwanahloko dibakeng tseo ditshintshi di ratang ho dula ho tsona le moo di tswallang teng. (Diqubung tsa bolokwe, diforong tsa metsi a ditshila le matamong a moitedi.)



- Use chemicals wisely and do not contaminate feed or water.
- Gebruik chemiese middels versigtig en moet nie voer of water besoedel nie.
- Sebenzisa amakhemikhali ngobuhlakani futhi ungangcolisi ukudla noma amanzi.
- Sebenzisa iikhemikhali ngobulumko uze ungazidibanisi nefidi okanye namanzi.
- Sebedisa dikhemikhale mme o se ke wa tshwaetsa dijo kapa metsi ka dikokwanahloko.



- Introduce parasitic wasps that attack pupae.
- Gebruik parasitiese perdebye wat die papies aanval.
- Sebenzisa izinambuzane ezihlasela izibungu eziba yizimpukane.
- Zisa oonomeva abazizifunxi-gazi abahlasela imibungu.
- Kenya di-parasitic wasps tse hlaselang mekone (pupae). **UM**

