



# Improve your AI conception rates

by Joel Nkuna, AI technician: Taurus

**Conception rate is the percentage of cows that have become pregnant through artificial insemination (AI) or natural mating. If you inseminate ten cows and you get six calves, then your conception rate will be 60%.**

When you are artificially breeding your cattle, you must consider the following factors:

- Nutrition and semen-handling have a major effect on conception rates
- Low conception rates can also occur when faulty insemination techniques are used.

## **Nutrition**

Feeding is very important. Cows in good body condition come on heat and get in calve quicker than cows in light condition or cows that are too fat. Do not overfeed cows.

## **Semen handling**

Exposing the semen to sunlight and rough handling of semen straws, can reduce conception rates.

## **Insemination techniques**

Rapid gun withdrawal may cause the semen to flow back. Passing the insemination gun too far forward or excessive movement of the pistollet in the uterus, may damage the lining of the uterus. Poor hygiene resulting in contamination of the pistollet, may introduce infection into the uterus.

## **Semen placement**

Semen is often placed too deep up one uterine horn or not deep enough in the reproductive tract. The correct placement is in the uterus body.

## **Heat detection**

Inseminating cows not on heat, inseminating the wrong cow or inseminating too early or too late, will seriously affect conception rates.

Other important factors that affect conception rates, are good management and good observation of your herd. [UM](#)

# Conception rate



Inseminate  
10 x cows



6 x cows  
pregnant



Conception  
rate = 60%

Conception rate is the percentage of cows that become pregnant through artificial insemination or natural mating.

## Factors that affect conception rates

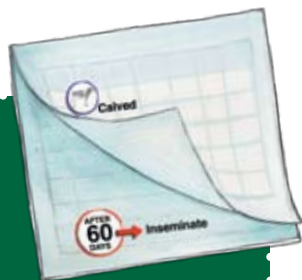
- **Nutrition:** Cows in good body condition come on heat and get pregnant more quickly
- **Semen and semen straws:** Handle with care
- **Insemination techniques:** Be careful not to damage the fragile lining of the uterus. Good hygiene prevents infection in the uterus
- Make sure that the cow is in heat
- Place semen inside the uterus body
- Good management and observation is very important!

## Bevrugtingstempo

Bevrugtingstempo is die persentasie koeie wat dragtig word deur kunsmatige inseminasie of natuurlike paring.

### Faktore wat bevrugtingstempo beïnvloed

- **Voeding:** Koeie met goeie liggaamskondisie kom makliker op hitte en word vinniger dragtig
- **Semen en semenstrooitjies:** Hanteer met sorg
- **Inseminasietegniese:** Wees versigtig om nie die delikate voering van die baarmoeder te beskadig nie. Goeie higiëne verhoed infeksie in die baarmoeder
- Maak seker die koei is op hitte
- Plaas semen binne in die baarmoeder
- Goeie bestuur en waarneming is baie belangrik.

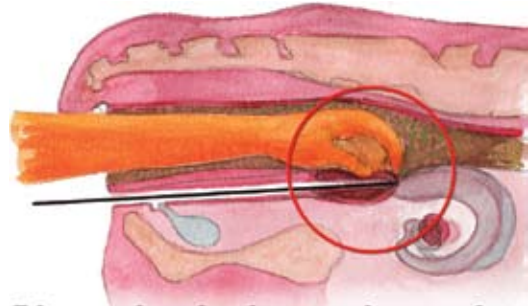


## Izinga lokubamba

Izinga lokubamba yiphesenti lezinkomazi ezimitha ngenxa yokumithiswa ngesandla noma ngokukhwelaniwa ngokwemvelo.

### Izinto enomthelela ezingeni lokubamba

- **Ukudla:** Izinkomazi ezisesimweni esikahle somzimba zifinyelela ekukhanukweni zimithe ngokushesha
- **Isidoda kanye nemicu yesidoda:** Kuphathe ngokucophelela
- **Amaqinga okumithisa ngesandla:** Cophelela ungalimazi untwentwesi lwengquza
- Qinisekisa ukuthi inkomazi ikhanukiwe
- Faka isidoda ngaphakathi impela kwengquza
- Ukuphatha okuhle kanye nokubhekisisa kusemqoka kakhulu!



**Place pistol into vulva and vagina to the end of the cervix.**

## Isantya sokuzala

Isantya sokuzala bubungakanani ekhulwini beemazi zeenkomo eziye zimithe ngokumiselwa okanye ngokukhwelwa.

### Iimeko ezichaphazela isantya sokumitha

- **Isondlo:** Iimazi zeenkomo ezomeleleyo ziyadumba (xa zifuna inkunzi okanye ukukhwelwa) zize zimithe ngokukhawuleza
- **Amadlozi nemicinga yamadlozi:** Kwenze ngononophelo
- **Iindlela zokumisela:** Lumnka ungayonakalisi inwebu ebuthathaka yesibekeko. Ukononotshelwa kococeko kukhusela ukosuleleka kwesibekeko
- Qinisekisa ukuba imazi idumbile (ifuna inkunzi, okt. ukukhwelwa)
- Faka amadlozi ngaphakathi kwisibekeko
- Kubaluleke kakhulu ukuyiqhuba kakhule nokuyiqwalasela ngononophelo le nkqubo.

## Sekgahla sa kemaro

Sekgahla sa kemaro ke persente eo ka yona dikgomo di imang ka yona ka ho kengwa peo ka mokgwa wa maiketsetso kapa di kopana ka tlhaho.

### Dintlha tse amang sekgahla sa kemaro

- **Phepo:** Dikgomo tse boemong bo bottle ba mmele di kopana le tse ding tse tona e be di emara ka potlako
- **Botona le mahlaka a botona:** Tshwara ka hloko
- **Mekgwa ya ho kenya botona ho tse tshhadi:** Hlokomela hore o se ke wa baka tshenyo moleng o bonolo wa popelo. Tshebetso e ntle ya bophelo e thibela tshwaetso popelong
- Etsa bonnete ba hore kgomo e maemong a ho batla ho kopana le e tona
- Kenya botona ka hara popelo
- Tsamaiso le tebelo e ntle ke tsona dintlha tsa bohlokwa haholo! **UM**