

# Start a **pig farm** (Part 1)

**Pig farming can be a highly profitable farming enterprise. Pigs are hardy animals and their feed requirements often make them very economical to farm with. However, there are many things to consider before you decide to farm with pigs.**

If you aim to become a commercial pig farmer, then it is better to farm with commercially recommended breeds such as the Large White, Landras, Duroc, et cetera. These breeds are preferred for their meat.

Other breeds found in South Africa, are the Kolbroek and the Windsnyer, but these pigs are not recommended for commercial production.


The main objectives of a commercial pig farm are:

- That pigs must grow as quickly as possible.
- That feed must be converted into muscle as effectively as possible.
- That pigs must not have too much fat in their meat.

Commercial pig farmers do not have to breed their own pigs. As in the case of cattle, pig farmers can artificially inseminate their sows or simply buy small litters of pigs. However, if you do decide to breed your own pigs, it is important to consider a number of things.

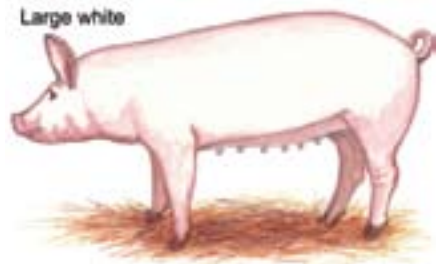
## **Breeding considerations**

- Ensure that each sow has straight and well-placed legs, and six healthy and well-placed teats on each side.
- One sow can raise 2 farrows per year, which means around 20 piglets per year.
- The farrowing pen must be well-designed so that your sow does not lie on the piglets and kill them.
- Lactating sows need lots of clean drinking water.
- One boar can serve approximately 12 sows.
- If you decide to inseminate artificially, use only semen sourced from biosecure farms.

In the next edition of *Ubisi Mail*, we will look at the land on which pigs should be kept and we address the very important aspect of biosecurity. 

# Choose a pig breed

- Choose a breed that is well-adapted to your area and your needs.
- Select your breeding sows between the age of 5 to 6 months (100 kg).
- A sow should have straight and well-placed legs and 12 healthy teats (6 on each side).
- One sow gives birth to about 10 piglets twice a year.
- Cull your sow after she has had babies 6 to 8 times.
- You need 1 boar for 12 sows.



## Begin 'n varkboerdery

- Kies 'n ras wat aangepas is vir jou omgewing en jou behoeftes.
- Selekteer jou teelsôe wanneer hulle tussen 5 en 6 maande oud is (100 kg).
- 'n Teelsog moet reguit, goed-geplaaste bene en 12 gesonde spene (6 aan elke kant) hê.
- Een sog kan ongeveer 10 varkies twee maal per jaar kry.
- Slag jou sog uit as sy al 6 tot 8 keer kleintjies gehad het.
- Jy het 1 beer vir elke 12 sôe nodig.

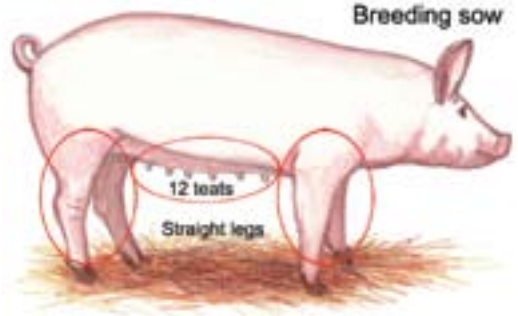
## Ukuqala ipulazi lezingulube

- Khetha uhlobo olukwazi ukujwayela kahle endaweni yangakini kanye nezidingo zakho ngqo.
- Khetha uhlobo lwezinsikazi zakho phakathi kwezinyanga ezi-5 ukuya kweziyi-6 ubudala (100 kg).
- Insikazi kufanele ibe nemilenze eqondile futhi



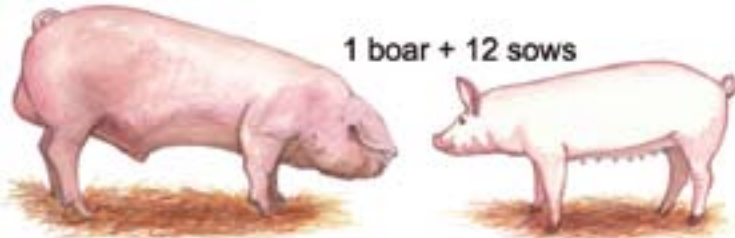
esendaweni ekahle kanye namatiti ayi-12 aphilile (ayi-6 ohlangothini ngalunye).

- Insikazi ngayinye ihulula amachwane ayi-10 kabili ngonyaka.
- Ibulale insikazi yakho emva kokuba seyibe namachwane izikhathi eziyi-6 ukuya kwezi-8.
- Udinga inkunzi eyo-1 yezinsikazi eziyi-12.



## Ho qala ho sebetsa ka difariki polasing

- Kgetha mofuta wa difariki o utlwanang le tikoloho eo o leng ho yona le ditlhoko tsa hao tse ikgethang.
- Kgetha difariki tse tshehadi tse dipakeng tsa dikgwedi tse 5 ho isa ho tse 6 (100kg).
- Fariki e tshehadi e tshwanetse hore e be le maoto a otlolohileng a qaqolohaneng hantle le mmele e 12 e phetseng hantle (6 ka lehlakoreng).
- Fariki e tswala madinyane a ka bang 10 habedi ka selemo.
- Bolaya mmatsona ka mora ho ba e tswale makgetlo a 6 ho isa 8.
- Ho hlokahala fariki e le nngwe ya poho hodima tse tshehadi tse 12.



## Ukuqalisa ukufuya iihagu

- Khetha uhlobo oluyiqhelileyo indawo yakho neemfuno ezithile zakho.
- Khetha iimazi zehagu zakho zokuzala eziphakathi kobudala beenyanga ezi-5 ukuya 6 (100 kg).
- Imazi yehagu kufuneka ibe namanqina ethe tse yaye ame kakuhle kunye nemibele eli-12 aphilileyo (6 kwicala ngalinye).
- Imazi yehagu enye izala malunga namantshontsho ehagu ali-10 kabini ngonyaka.
- Khetha imazi yakho yehagu kwezinye emva kokuba ibe namantshontsho ka-6 ukuya 8.
- Ufuna inkunzi yehagu e-1 ngeemazi zehagu ezi-12. 