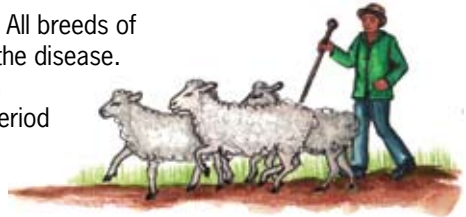


# Sheep diseases (Part 4)

**Jaagsiekte or sheep pulmonary adenomatosis, is a form of infectious lung cancer in sheep. It is caused by a so-called retrovirus. The name 'jaagsiekte' comes from the fact that when sheep are herded and chased together, they show signs of respiratory distress.**

## Occurrence

Jaagsiekte occurs in many parts of the world. All breeds of sheep, especially young lambs, can contract the disease. Lambs over the age of six months will seldom contract the virus, but the virus's incubation period (during which it 'rests') is long, sheep will only show clinical signs when they are older.



## Transmission

The disease is transmitted where sheep are in close contact with one another. When affected sheep cough, the healthy sheep around them inhale the virus. The virus affects the lungs. The lambs of infected ewes can also become infected.

## Disease signs

The disease can take between eight to 24 months or even longer after infection until it shows clinical signs. Affected sheep breathe rapidly, especially while or after being herded. Seriously affected sheep lag behind the rest of the flock and cough frequently. They struggle to breathe, become thin and eventually die.

Jaagsiekte is a chronic illness (it cannot be cured) and sheep can live for two to four months or longer after the first clinical signs are seen. Jaagsiekte is often made worse by pneumonia that is caused by *Mannheimia* or *Corynebacterium/Arcanobacterium* infection. Sheep with this type of pneumonia will usually die quicker.

The dead sheep's lungs are marble-like, grey-white, and heavier than usual. They are solid like liver, and the lung lymph glands may also be affected.

## Prevention and control

No effective vaccine or treatment is available. Affected sheep must be slaughtered as soon as the infection is confirmed in order to prevent the spread of the disease in the flock. An early form of detection is when you lift a sheep by its hind legs, the sheep becomes anxious and fluid might run from the nostrils. This would indicate jaagsiekte.

# Sheep diseases: Jaagsiekte

**Affects the lungs. No effective vaccine or treatment is available.**

**Transmission:** Coughing by an infected sheep. Ewes can infect their lambs.

**Symptoms:** Rapid breathing, especially while or after being herded. Sheep lag behind the flock, cough frequently, struggle to breath, become thin and eventually die. Lungs are marble-like, grey-white, and heavy.

**Early detection:** Lift the sheep by its hind legs. The sheep becomes anxious and fluid might run from the nostrils.

**Prevention:** Slaughter sick sheep.

## Skaapsiektes: Jaagsiekte

**Dit raak die longe. Geen doeltreffende inenting of behandeling is beskikbaar nie.**

**Oordrag:** Hoes naby geïnfekteerde skape. Ooie kan hul lammers infekteer.

**Simptome:** Vinnige asemhaling, veral terwyl of ná skape aangekeer is. Is altyd laaste in trop, hoes gedurig, sukkel om asem te haal, raak maer en vrek later. Die longe is marmeragtig, grys-wit en swaar.

**Vroeë opsporing:** Lig die skaap aan sy agterpote. Indien geïnfekteer, sal die skaap angstig raak en vloeistof sal van die neusgate drup.

**Voorkoming:** Slag siek skaap.



Coughing sheep transmits virus

## Izifo zezimvu: i-Jaagsiekte

**Ithelelela amaphaphu. Akukho khambi elingumjovo noma ukwelapha okusebenza ngempumelelo.**

**Ukudluliswa:** Ukukhwehlela okuvela kuleyo mvu ethelekile. Izimvukazi zingathelela amazinyane azo.

**Izimpawu:** Ukuphefumula ngokushesha, ikakhulukazi ngenkathi noma ngemuva kokwaluswa. Ukusalela emuva emhlambini, ukukhwehlela njalo nje, kube nzima ukuphefumula, yonde bese igcina isifile. Amaphaphu afana namamabuli, awubumhlophe obusazimvu, futhi ayasinda.

**Ukutholakala kusenesikhathi:** Phakamisa imvu ngemilenze yayo yangemuva. Imvu ingashabasheka futhi uketshezi kungenzeka lwehle luphume ngamakhala.

**Ukuvimbela:** Yihlabe imvu egulayo.

## Izifo zeegusha: i-Jaagsiekte

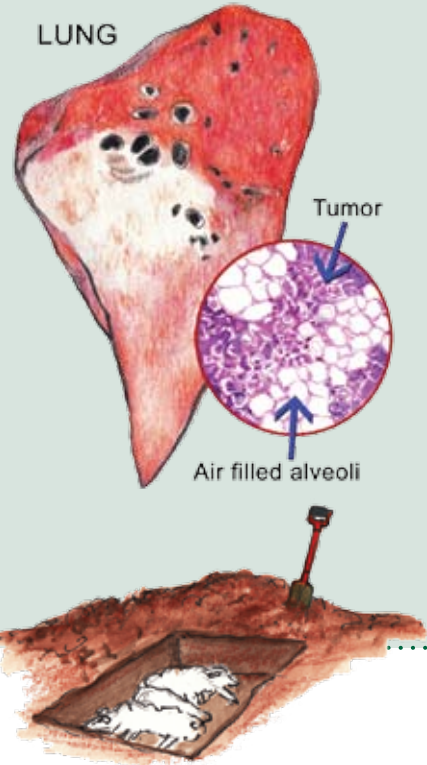
**Ichaphazela imiphunga. Akukho sitofu sokugonya okanye unyango olufumanekayo.**

**Ukosulela:** Ngokukhohlela kwegusha eyosulelekileyo. Iimazi zegusha zinokosulela amatakane azo.

**Iimpawu:** Ukuphefumla ngokukhawuleza, ingakumbi ngexa okanye emva kokwaluswa. Ukusala ngasemva emhlabini, ukukhohlela rhoqo, ubunzima bokuphefumla, ukubhitya ize ekugqibeleni ife. Imiphunga ibufana nemabhule, ibe bungwevu –mhlophe, kwaye ibe nobunzima.

**Ukuyibona kwangoko:** Phakamisa igusha ngamanqina ayo angasemva. Igusha iyaxhalaba kwaye kunokuphuma ulwelo emathatheni ayo.

**Uthintelo:** Yixhele igusha egulayo.



## Mafu a dinku: Jaagsiekte

**A tshwaetsa matshwafo. Ha ho na ente kapa kalafo e atlehang.**

**Phetiso:** Ho hohlola ha nku a nang le tshwaetso. Dinku tse tshehadi di ka tshwaetso dikonyana.

**Matshwao a ho kula:** Ho phefumoloha kapele haholo, ka ho kgethehileng nakong eo di disitsweng kapa ka mora ho diswa Nku e salla morao mohlaping, e hohlola kgafetsa, e sitiseha ho phefumoloha, e ya ota mme qetellong e ya shwa. Matshwao a tshwana le mabole, a boputswa bo bosweu, le ho bipetsana.

**Temoho ya pele:** Phahamisa nku ka maoto a yona a ka morao. Nku a bonahala e kgathatsehile mme mokedikedi o ka tswa dinkong tsa yona.

**Thibelo:** Hlaba nku e kulang. 